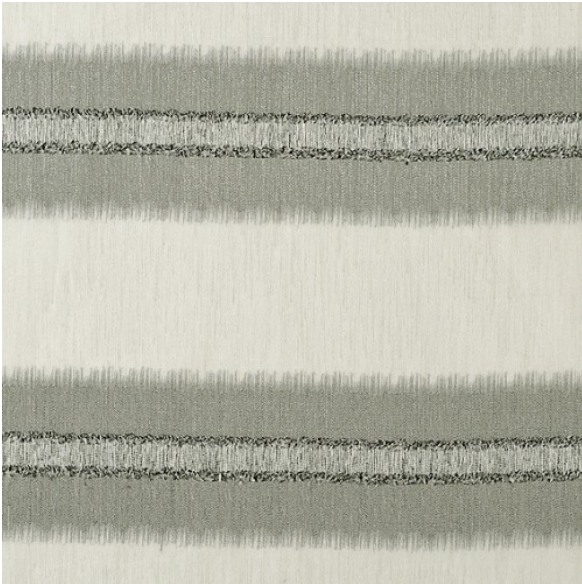


Cloe

Cloe



Colours : 3



994 Pizarra


Cloe is a double faced sheer using the fil coupé technique. The horizontal stripes have been raised above the delicate base. The woven stripes run over the fabric adding an outstanding movement. The casual elegance is full of style with Cloe. .

Meters by roll : 25

Composition : 100% Pol.

Width : 330 cm.

Weight : 440 gr.

Horizontal/Vertical pattern repeat 

Valid for :



Washing and care instructions : 

Remarks : With leadband